

1495



UNIVERSITY OF  
**ABERDEEN**

# ANATOMY TEACHING FELLOWS ( 2 posts)

SCHOOL OF MEDICINE, MEDICAL SCIENCES AND NUTRITION

Closing date: 06 July 2022  
Interview date: To be confirmed  
Reference number: MED144A



Version: Sep21

## INTRODUCTION

---

We are seeking two Teaching Fellows/ Demonstrators with qualifications and experience in Anatomy to join the team of academic, technical, and professional services staff in the delivery of our world-class MBChB, BSc, BDS, Physician Associate and Science teaching programmes. The post will be located in the University's Suttie Centre, on the Foresterhill Healthcare Campus.

These posts are available now, one open ended and one fixed term for two years. These are designed to increase our teaching capacity within Anatomy, and the persons appointed will join an enthusiastic, hard-working team led by our Regius Professor of Anatomy, Simon Parson. Anatomy teaching at Aberdeen is well-regarded locally and nationally, and you will have the opportunity to be a part of this success. We strive to deliver excellent, student-centred education and constantly seek to improve and innovate. You will have the opportunity to contribute to a range of modern teaching opportunities, where we aim to encourage problem solving and understanding ahead of memorisation of anatomy. We have excellent, modern facilities and are currently investing in upgraded digital resources and learning spaces. Anatomy is a key subject area within the Institute of Education for Healthcare and Medical Sciences and a significant part of the Suttie Centre where staff are based.

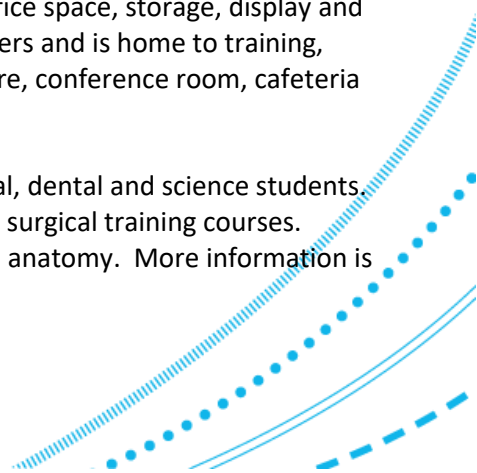
Aberdeen has a global reputation for academic excellence both in the delivery of healthcare and medical sciences education and in medical education research and development. The suite of Medical Science undergraduate honours programmes is highly regarded (several programmes ranked in the top ten of UK league tables) and delivered to more than 200 students per cohort. The MBChB programme is also consistently ranked in the top ten of UK league tables and is delivered to 275 students per cohort. An innovative 4-year graduate entry dental programme (BDS) is delivered to 20 students per cohort and the 2-year Masters in Physician Associate Studies, which is the only such qualification in Scotland, is delivered to around 25 students per cohort. The School also delivers a range of other healthcare and medical science postgraduate programmes delivered on-line, face to face or by blended approaches and runs an award-winning widening access pre-medical access programme (Gateway2Medicine).

The post is based in the Institute of Education for Healthcare and Medical Sciences (IEHMS) in the School of Medicine, Medical Sciences and Nutrition (SMMSN). The primary role of the post holder will be to deliver, develop and manage teaching and learning activities in Anatomy contributing to the healthcare programmes of the School: (MBChB; BDS and Masters in Physician Associate Studies) and the suite of BSc Medical Sciences programmes. The post holder will be supported in their role by an experienced and vibrant academic, technical and administrative support team in Anatomy, the IEHMS and wider university.

The healthcare programmes are delivered in Aberdeen predominantly within the Suttie Centre for Teaching & Learning in Healthcare (<https://www.abdn.ac.uk/iehms/suttie-centre/index.php>) and in the Dental School on the Foresterhill Healthcare Campus. In the last later clinical years of all the healthcare programmes, we operate a dispersed campus model, in Inverness, the Highlands and Islands where we maintain a supportive and creative environment for the development and maintenance of a positive teaching and learning culture and the provision of an excellent student experience.

The successful applicants will be based at the Suttie Centre, Foresterhill, a modern, purpose-built facility <https://www.abdn.ac.uk/suttie-centre/index.php> in which we have Anatomy labs, office space, storage, display and other teaching spaces. This building is shared with our partners NHS Grampian partners and is home to training, meeting and education facilities for healthcare programmes including a lecture theatre, conference room, cafeteria and computer suite.

Prosection-based anatomy teaching is delivered across a full academic year to medical, dental and science students. Dissection-based courses are available for some undergraduate and for postgraduate surgical training courses. Research into educational, basic and applied anatomical topics is also a key activity in anatomy. More information is available at <https://www.abdn.ac.uk/suttie-centre/anatomy/index.php>.



## JOB DESCRIPTION

---

### MAIN PURPOSE OF THE ROLE:

You will initially be engaged in the delivery of face-to-face teaching to undergraduate students across a range of programmes of study. This will chiefly be based on cadaveric teaching from prosections, but will extend to digitally enhanced teaching using a range of 3D and digital resources. Teaching is supported by experienced academic and clinical colleagues throughout, and there are excellent opportunities to become involved in the design of novel opportunities for students. Assessment, both in person and online, will be a key element of the role, and there will be opportunities to design and mark student work and to contribute to the delivery and organisation of Anatomy teaching and assessment, deliver Undergraduate dissection teaching, prepare prosected materials, contribute to student support, teaching initiatives and teaching administration. You will work within the terms and requirements of the Anatomy Act.

### KEY RESPONSIBILITIES:

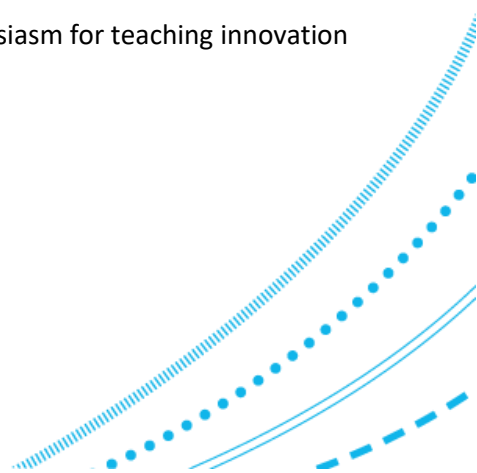
- Deliver face-to-face, practical, online and blended teaching in laboratory, classroom and virtual settings.
- Deliver undergraduate dissection and practical classes.
- Help with organisation of course delivery and assessment.
- Act as Personal Tutor for students.
- Contribute to project organisation and supervise Honours and Masters research projects.
- Contribute to course and curriculum development including blended learning approaches and online delivery.
- Contribute to student engagement in recruitment and during their studies.
- Plan, design, and deliver teaching and assessment materials as appropriate to own expertise meeting course / programme requirements
- Be engaged in elements of research as appropriate
- Balance the requirements of teaching, development and administrative demands and competing deadlines.

## CANDIDATE BACKGROUND

---

The candidates should be educated to Masters level ((or equivalent qualification) in Anatomy or related subject such as physiology or medicine or to BSc (Hons) level with several years' experience relevant to this role including teaching with cadaveric material. PhD in a relevant subject within medical sciences areas, such as molecular biology, biochemistry, physiology or pharmacology would be desirable.

UG teaching experience (including dissection and laboratory practicals) and an enthusiasm for teaching innovation and development is required.





## TERMS OF APPOINTMENT

---

Salary will be at the appropriate point on Grade 6, £34,304 - £40,927 per annum, and negotiable with placement according to qualifications and experience.

Any appointment will be made subject to satisfactory references and probation period

For further information on various staff benefits and policies please visit [www.abdn.ac.uk/staffnet/working-here](http://www.abdn.ac.uk/staffnet/working-here)

This role is based in the UK and as such the successful candidate will be required to live and work in the UK.

The candidate appointed to this post may be eligible for homeworking on an occasional or regular basis. For more information please refer to our [Homeworking Policy](#).

This post does not meet the minimum requirements for visa sponsorship under the Skilled Worker Route. We are therefore unable to consider applicants for this post that require sponsorship to work in the UK.

### AT A GLANCE

#### SALARY:

Grade 6

£34,304 - £40,927 per annum

#### HOURS OF WORK:

Full-time – 37.5 hours per week

#### CONTRACT TYPE:

Substantive or time limited -  
available for two years

#### LOCATION:

Aberdeen



## PERSON SPECIFICATION

	ESSENTIAL	DESIRABLE
<p><b>Education/Qualifications</b>            Academic, technical and professional education and training</p>	<ul style="list-style-type: none"> <li>• Educated to Masters level in Anatomy or related subject such as physiology or medicine or to BSc (Hons) level with several years relevant experience.</li> </ul>	<ul style="list-style-type: none"> <li>• PhD in a relevant subject within medical sciences areas, such as molecular biology, biochemistry, physiology or pharmacology.</li> <li>• Post graduate certificate in education or equivalent e.g. Fellowship of Higher Education Academy or Academy of Medical Educators</li> </ul>
<p><b>Work and Other relevant experience (including training)</b>            e.g. Specialist knowledge, levels of experience, supervisory experience, research</p>	<ul style="list-style-type: none"> <li>• Experience in Anatomy teaching organisation and delivery.</li> <li>• Experience of different modes of teaching delivery including face-to-face, practicals, small group, online.</li> <li>• Experience of digital packages for teaching, learning and assessment.</li> <li>• Experience in student supervision in anatomy laboratory settings</li> <li>• Familiar with different forms of teaching methods, evaluation, assessment and feedback.</li> <li>• Experience of quality management of education.</li> <li>• Knowledge of equality and diversity issues and issues relating to specific learning needs.</li> <li>• Demonstrated experience of planning, organising and prioritising multiple tasks or projects and successfully meeting deadlines.</li> <li>• Knowledge of and ability to apply to work situations the Anatomy Act, GDPR and disability requirements.</li> </ul>	
<p><b>Personal qualities and abilities</b>            e.g. initiative, leadership, ability to work on own or with others, communication skills</p>	<ul style="list-style-type: none"> <li>• Willingness to create, develop and participate in blended learning / online delivery approaches to teaching and assessment.</li> <li>• Evidence of strong commitment to an inclusive and supportive culture that promotes a student-centred approach.</li> </ul>	

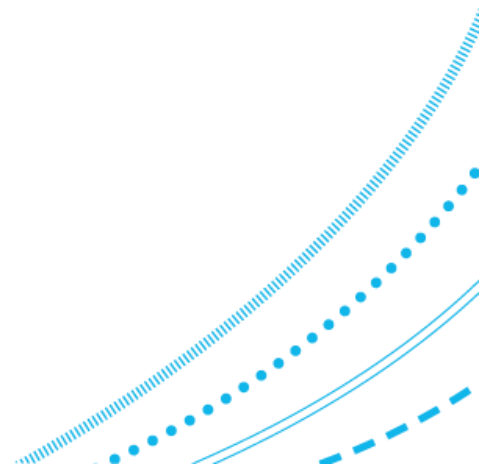


- Excellent communication skills and experience in the development of networks with students and colleagues.
- Ability to work independently and within teams to ensure goals are met and to respond quickly and appropriately to new developments and opportunities.
- Good organisational skills, with ability to reprioritise workload in response to changing events.

**Other**

e.g. special circumstances (if any) appropriate to the role such as unsocial hours, travelling, Gaelic language requirements etc.

- Some flexible working may occasionally be required to support the student classes.



## UNIVERSITY OF ABERDEEN

*open to all and dedicated to the pursuit of truth in the service of others*

The University of Aberdeen is a broad based, research intensive University, and we put students at the centre of everything we do. Outstanding in a wide range of discipline areas, Aberdeen is credited for its international reach and commercialisation of research ideas into spin out companies. The University has over 16,000 matriculated students and 3,600 staff representing 130 nationalities. We encourage bold thinking, creativity and innovation, and we nurture ambition with many opportunities for professional and personal development in an inclusive learning environment which challenges and inspires.



## CURRENT CONTEXT

The University continues to build on its achievements. Underpinning our high performance and significant growth is a £100m investment in Aberdeen's estate which will include the completion of a new Science Teaching Hub, the regeneration of the historic King's Quarter and a new Business School building. The University has also invested in 50 new academic posts and in 2020 launched five interdisciplinary, cross-institution Research Centres that will catalyse world-leading research in our areas of strength. Our five Interdisciplinary Challenges are: Energy Transition; Social Inclusion and Cultural Diversity; Environment and Biodiversity; Data and Artificial Intelligence; and Health, Nutrition and Wellbeing.

## ABERDEEN 2040

On our 525th anniversary as a University we launched [Aberdeen 2040](#), our strategic vision for the next 20 years. Four strategic themes will shape our learning and discovery, underlined by 20 commitments we have made against each theme:

- Inclusive**

We welcome students, staff and partners from all backgrounds, organisations and communities. We value diversity.
- Interdisciplinary**

We innovate in education and research by generating, sharing and applying new kinds of knowledge. We learn together.
- International**

We connect with others and extend our networks and partnerships around the world. We think across borders.
- Sustainable**

We understand and nurture our environment, and take care of our resources, including our people and finances. We work responsibly.





## OUR EDUCATION

Recognised as the Scottish University of the Year in the Times and Sunday Times Good University Guide 2019, we remain true to our roots as an ancient Scottish university, combining breadth and depth in our degree programmes and drawing strength from the quality of our research. Our flexible curriculum encourages students to grow as independent learners and therefore to thrive as graduates in the diverse workplaces of the future. Our education is open to all and we are setting ambitious targets to further widen access.

## OUR RESEARCH

Researchers at the University of Aberdeen have been at the forefront of innovation and excellence throughout the centuries, generating insights in medicine, science, engineering, law, social sciences, arts and humanities. This research has contributed to five Nobel prizes as well as other awards such as the Queen's Anniversary prize. Our research is intellectually rigorous working within our established areas of excellence as well as new methods of enquiry. We will continue to generate new knowledge addressing economic and societal issues with ambition and imagination, ensuring that it is globally excellent and locally relevant.

## INTERNATIONAL

Aberdeen is increasing its international presence, positioning the University as a global organisation and building on established global partnerships in e.g. Qatar, China, North America, Europe. We feature in the top 50 institutions worldwide for international students<sup>1</sup> and have been named 31<sup>st</sup> in the world for International Outlook<sup>2</sup>. The University of Aberdeen is proud to be the first UK University to deliver programmes on a dedicated campus in Qatar in partnership with AFG College. Phase 1 has successfully recruited over 600 students and Phase 2 will see the creation of a substantially larger campus, with capacity for at least 5,000 students and research activity. For further information on our Qatar campus visit [www.abdn.ac.uk/qatar](http://www.abdn.ac.uk/qatar).

## IMPACT

Our dedication to building a sustainable future is reflected in the Times Higher Education Impact Rankings 2021 where we were ranked in the top 60 Universities worldwide for positive impact on society.

In 2020 the University signed the United Nations Sustainable Development Goals accord, solidifying our commitment to developing the world in a sustainable way. In 2021 we were listed in the global Top 50 for 6 of these goals and in the UK Top 20 for all 17<sup>3</sup>.

<sup>1</sup> QS World University Rankings 2022

<sup>2</sup> Times Higher Education World University Rankings 2022

<sup>3</sup> Times Higher Education Impact Rankings 2021



## SCHOOL OF MEDICINE, MEDICAL SCIENCES AND NUTRITION

The School (<https://www.abdn.ac.uk/smmsn/index.php>) encompasses all of the disciplines that underpin today's medicine, including biomedical sciences, health sciences, nutrition and medical, medical science and dental education and these are organised into five Institutes. The largest school in the University, the SMMSN has five Institutes: the Institute of Medical Sciences (IMS), the Institute of Applied Health Sciences (IAHS), the Rowett Institute, the Institute of Education in Healthcare and Medical Sciences (IEHMS), and the Institute of Dentistry, comprising all of our undergraduate and postgraduate programmes and our own graduate entry Dental School.

Staff are line managed and research opportunities are supported through our institutes which work together in an integrated and coordinated way to deliver research and teaching across the School, details of which can be found on their websites as below.

- The Institute of Applied Health Sciences <https://www.abdn.ac.uk/iahs/>
- The Institute of Medical Sciences <http://www.abdn.ac.uk/ims/>
- The Rowett Institute <http://www.abdn.ac.uk/rowett/>
- The Institute of Education in Healthcare and Medical Sciences <https://www.abdn.ac.uk/iehms/>
- The Institute of Dentistry <https://www.abdn.ac.uk/dental/>

### Research

Within the IMS, our scientists are working towards the creation of effective therapies for patients with a range of debilitating and life-threatening conditions. Current research areas include arthritis and musculoskeletal medicine; cell developmental and cancer biology; immunity, infection and inflammation; metabolic and cardiovascular health; microbiology and translational neuroscience.

Within the IAHS, research is focused on improving health and health care delivery. It is home to a multidisciplinary grouping of around 100 university academic staff who conduct population and clinically-orientated health research and hosts the Health Services Research Unit (HSRU) and Health Economics Research Unit (HERU), both funded by the Chief Scientist's Office (CSO) of the Scottish Government.

As well as being the organisational home to the teaching scholarship staff and responsible for oversight of the UG and PGT programmes offered by the School, the IEMDS promotes and supports excellence in medical education through research and development, with a focus on conceptually and theoretically robust research and development which has strong potential for reaching international recognition.

The Dental Institute runs an undergraduate BDS programme and a growing suite of master's programmes for professional development.

We have a number of specialist Centres representing areas of particular research strength and capacity within the School all of which are willing to support colleagues on projects in their areas. More information is available at the following websites.

- The Centre for Healthcare Education Research and Innovation (<https://www.abdn.ac.uk/acdc/>)
- The Centre for Health Data Science (<https://www.abdn.ac.uk/achds/>)
- The Aberdeen Cardiovascular & Diabetes Centre (<https://www.abdn.ac.uk/acdc/>) and
- The Aberdeen Centre for Arthritis and Musculoskeletal Health (<https://www.abdn.ac.uk/acamh/>)

## Teaching

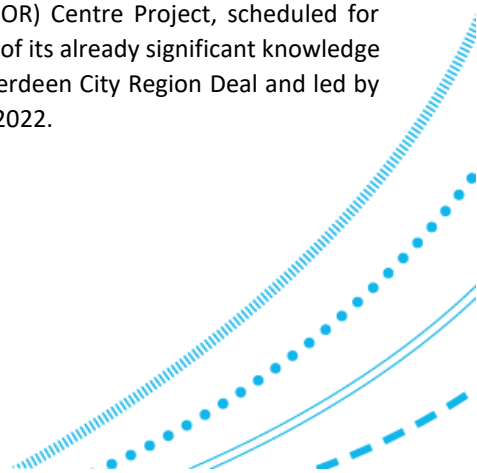
Aberdeen has a global reputation for academic excellence both in the delivery of medical and medical sciences education and in medical education research and development. The suite of Medical Science undergraduate honours programmes is highly regarded and delivered to more than 700 students. We have a growing postgraduate (Masters) student population, with our on campus and online programmes delivered to more than 400fte students per year. The existing MBChB programme is currently ranked first in Scotland and is delivered to almost 1000 students. An innovative 4-year graduate entry dental programme is delivered to 80 students. The School also delivers an award-winning widening access pre-medical access programme (Gateway2Medicine).

The BSc and Masters programme practicals are delivered in our newly opened, state-of-the-art, Science Teaching Hub ([Science Teaching Hub | Study Here | The University of Aberdeen \(abdn.ac.uk\)](#)) on the Old Aberdeen campus. Honours and Masters laboratory-based research projects are carried out within the Institute of Medical Sciences and Rowett Institute in working research laboratories.

The healthcare programmes are delivered in a dispersed campus model, where we maintain a supportive and creative environment for the development and maintenance of a positive teaching and learning culture and the provision of an excellent student experience.

The School is home to over 800 staff and 2000 fte students. It is located on the Foresterhill site, shared with our main clinical partner, NHS Grampian, with whom we work in close collaboration at primary and secondary care levels. This is one of the largest integrated healthcare delivery, training and research sites in Europe and has rich assets including state-of-the-art academic (research and teaching) and clinical buildings. Excellent infrastructure is also provided through core facilities for biomedical science including flow cytometry, proteomics, microscopy and genome sequencing, support for data health science projects and clinical trials.

The last major academic capital development was the opening of the Rowett Institute, occupied in March 2016, whose staff undertakes nutrition research to help improve people's lives through the prevention of ill-health and disease. Their new £40M building has provided the University of Aberdeen with a facility with unique capabilities for human nutrition and metabolic research. Currently, the NHSG is carrying out an exciting £164 million building development creating The Baird Family Hospital and The Aberdeen and North Centre for Haematology, Oncology and Radiotherapy (ANCHOR) Centre Project, scheduled for completion in 2023. The Foresterhill health sciences campus is undergoing a major expansion of its already significant knowledge transfer incubator space, with a new Bio-Therapeutics Hub for Innovation, funded by the Aberdeen City Region Deal and led by the development body Opportunity North East. This building is expected to open in October 2022.



## ABERDEEN AND ABERDEENSHIRE

---

Scotland's third largest city, Aberdeen sits on the coast between the mountains of Aberdeenshire and the stunning North Sea coastline. The Aberdeen City region is a can-do place that is actively investing, at scale, in its future.

Renowned as a Global Energy Hub, Aberdeen is a vibrant, entrepreneurial region, home to a unique mix of business opportunities and specialist skills across various sectors including energy, technology, life sciences and food & drink. More than 20% of Scotland's top businesses are located in this region which is taking great strides to ensure that it continues to compete on a world stage. Investments of more than £10 billion of public and private infrastructure is due to be delivered before 2030, marking an exciting time to be part of a genuine world-class location.

Built from sparkling local granite Aberdeen has earned the name of the Silver City. As the energy capital of Europe, Aberdeen nevertheless retains its old-fashioned charm and character making it an attractive place in which to live, work and study. Due to its global business and international energy industry credentials, Aberdeen is well served by local and national transport infrastructure with excellent rail networks that run both North and South of Scotland and the rest of the UK. It also acts as an international travel hub. Flying time to London is just over one hour with regular daily flights and serves international travel to European centres such as Amsterdam (Schiphol) and Paris (Charles de-Gaulle) as well as flights to other European destinations.

The City and the surrounding countryside provide a variety of urban, seaside and country attractions. Aberdeen has first class amenities including [His Majesty's Theatre](#), [Music Hall](#), [Art Gallery](#), [the P&J Arena](#), [Museums](#), and [Beach Leisure Centre](#). The City is framed by its accessible beach front which is within a short walk of the city centre and there are an array of activities available across the region such as hill walking; mountaineering; sailing; surfing; salmon, trout and sea fishing; golf; sailing; surfing and windsurfing. The surrounding countryside, known as Aberdeenshire, is also one of Scotland's most appealing regions. Royal Deeside and the Cairngorms National Park are within easy access of the city, and there are a variety of towns and villages scattered along the coastline.

Aberdeen has ranked consistently highly in nationally recognised quality of life surveys, and was recently named the happiest city in the UK to live and work in<sup>4</sup>.

To find out more visit [www.visitabdn.com](http://www.visitabdn.com)

---

<sup>4</sup> Shawbrook Bank Happiest Cities Index 2021





## EQUALITY AND DIVERSITY

---

The University values a diverse working environment and recognises the benefits this can bring. The University is keen to receive applications from individuals from across all of the equality protected characteristics (age, disability, gender reassignment, marriage and civil partnership, pregnancy and maternity, race, religion or belief, sex, sexual orientation).

The University supports opportunities for flexible working for a range of reasons and has policies in place to facilitate this. The policies can be found at <https://www.abdn.ac.uk/staffnet/working-here/flexible-working--5607.php>.

The University's commitment to gender equality has been recognised through the achievement of an Athena SWAN Bronze award at an institutional level and across all its subject areas. The University is also a Stonewall Diversity Champion to further LGBT+ equality.

The University is signed up to Advance HE's Race Equality Charter, affirming the University's commitment to the charter's aim of improving the representation, progression and success of minority ethnic staff and students within higher education.

Candidates who are British Sign Language (BSL) users can contact us directly by using [contact SCOTLAND-BSL](#).

The University is delighted to be accredited as a [Disability Confident](#) employer and strives to ensure that disabled staff and students have the opportunity to work and study in an inclusive, accessible and supportive environment.

[www.abdn.ac.uk/staffnet/governance/equality-and-diversity-277](http://www.abdn.ac.uk/staffnet/governance/equality-and-diversity-277)

## HOW TO APPLY

---

Online application forms are available at [www.abdn.ac.uk/jobs](http://www.abdn.ac.uk/jobs)

The closing date for receipt of applications is **06 July 2022**

Should you wish to make an informal enquiry please contact:

Regius Professor Simon Parson (e-mail: [simon.parson@abdn.ac.uk](mailto:simon.parson@abdn.ac.uk))

Please do not send application forms or CVs to Regius Professor Parson

Please quote reference number **MED144A** on all correspondence

